

CMS2.0 User Manual

V 2.0.1

Welcome

Thank you for purchasing our DVR!

This operating manual is designed to be a reference tool for the installation and operation of your system.

Disclaimer: We reserves the right without notice to change, add, modify or remove any information and materials on this manual in any manner and at any time. All materials accurate through carefully checking, but We shall not be responsible to bear the consequence if any errors.

Table of Contents

1. CMS2.0 System Introduction.....	1
1.1 Features.....	1
1.2 Application Diagram.....	1
2.CMS2.0 Installation and Uninstallation.....	2
2.1 Working Environment Requirements.....	2
2.1.1 Hardware Requirements.....	2
2.1.2 Software Requirements.....	2
2.2 Client Software Installation.....	3
2.3 Client Software Uninstallation.....	4
3. CMS2.0 Client Operation.....	4
3.1 Login Interface.....	4
3.2 Addition of Devices.....	5
3.3 Real-time Preview.....	7
3.4 Introduction of The Software Main Interface.....	10
3.4.1 Video Split.....	11
3.4.2 Monitoring Plan.....	11
3.4.3 Playback.....	14
3.4.4 Log.....	16
3.4.5 LocalSet.....	17
3.4.6 Real-Time Backup.....	20
3.4.7 PTZ control.....	21
3.4.8 Color settings.....	23
3.5 Remote settings.....	23
3.5.1 System information view.....	23
3.5.2 System settings.....	24

1. CMS2.0 System Introduction

1.1 Features

Remote Control: Remote connection to control the DVR through network.

Real-time Preview: Real-time preview of video.

Video Playback: Remotely playback recorded video

Video Download: Remotely download recorded video.

Devices Management: Remote configuration and management of DVR

PTZ Control: Remotely control PTZ.

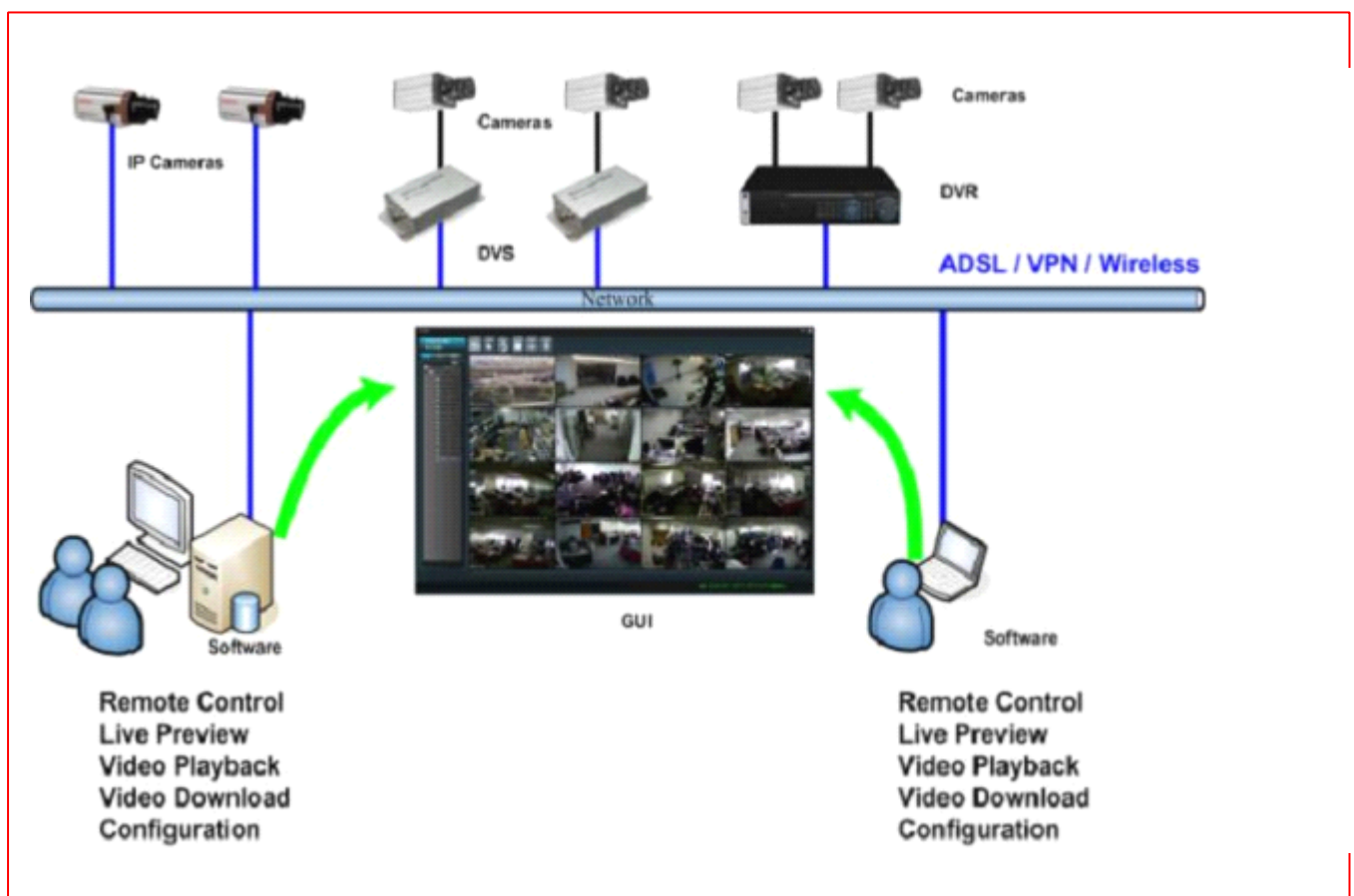
Alarm Settings: Configure DVR alarm settings

Monitoring Plan: Make monitoring plans for every device, every device window and every device channel

Log searching: Search for the logs in DVR

User Management: Create Cms2.0 software user, Set users' rights, create user groups, set users' permissions

1.2 Application Diagram



2.CMS2.0 Installation and Uninstallation

2.1 Working Environment Requirements

2.1.1 Hardware Requirements

CPU	Pentium 4 above 2.0 GHz
Memory	More than 512MB(suggest the use of dual channels)
Graphics	Must support hardware graphic card (e.g. ATI、 TNT2 PRO),suggest the use of dual channel graphics of ATI9800 or higher at
NIC	10/100M
Display Resolution	Recommend 1024*768,1280*1024,support widescreen

2.1.2 Software Requirements

Operation system: Fit Windows 7/ Windows 2000/ Windows XP / Windows 2003/ Windows Vista.

We do not recommend running under Windows 98.

1. Recommend using Microsoft Windows XP Professional SP2
2. Install DirectX 9.0c or above
3. Need to use the latest graphics card drivers
4. We do not recommend installing a firewall (Installing a firewall, including system firewalls, can lead to remote access connection failure.)

*** Notes ***

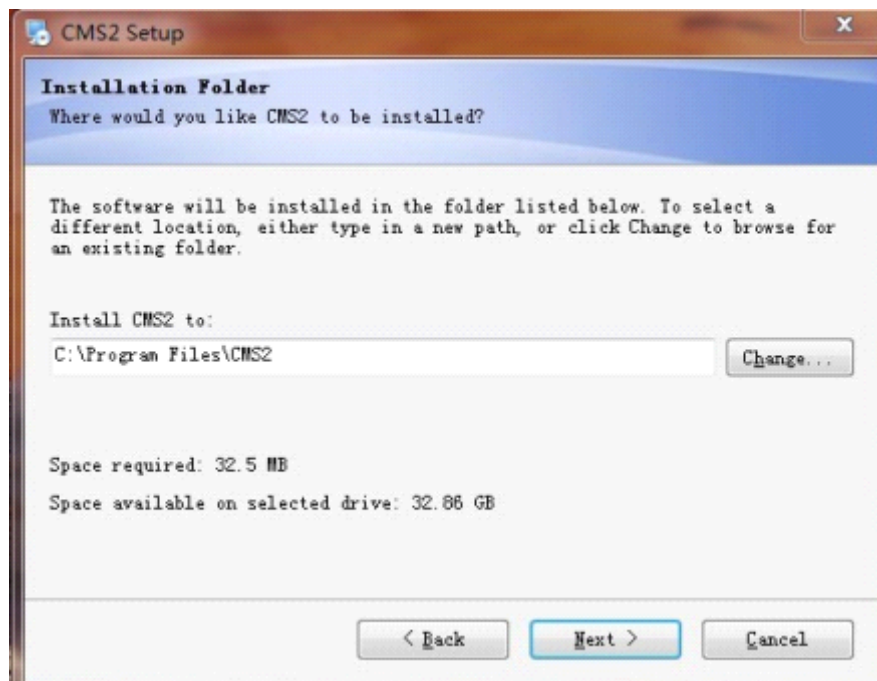
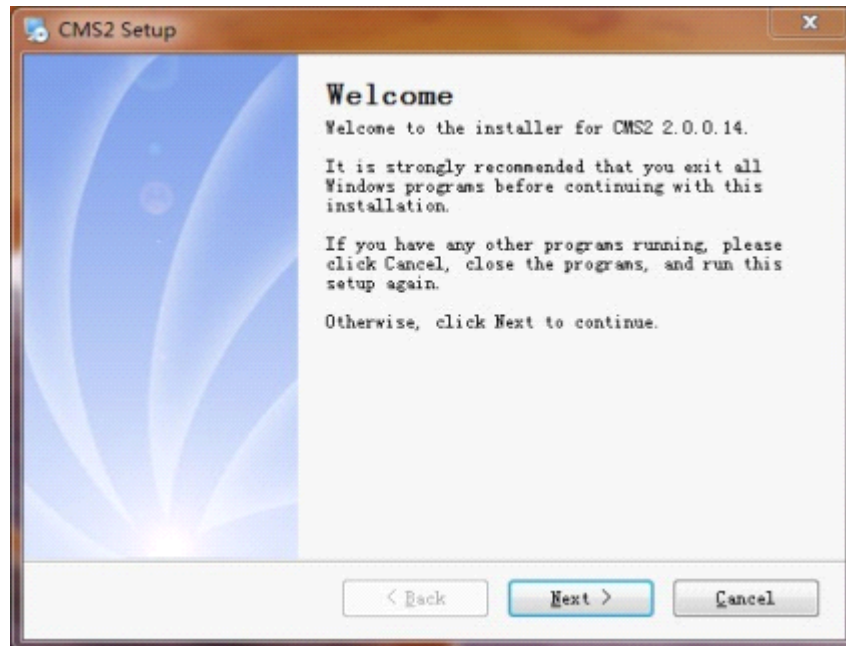
The software is for connecting multiple devices of different types or models (e.g. DVR、DVS etc.), but this manual is only for the software operation. Please read the specifications of related products if the function setting of specific devices is involved.

This manual is for anyone who is in charge of planning, implementing and reviewing hardware installation of network video surveillance. You should have the basic knowledge and experience of operating the related devices (e.g. DVR、 DVS etc.).

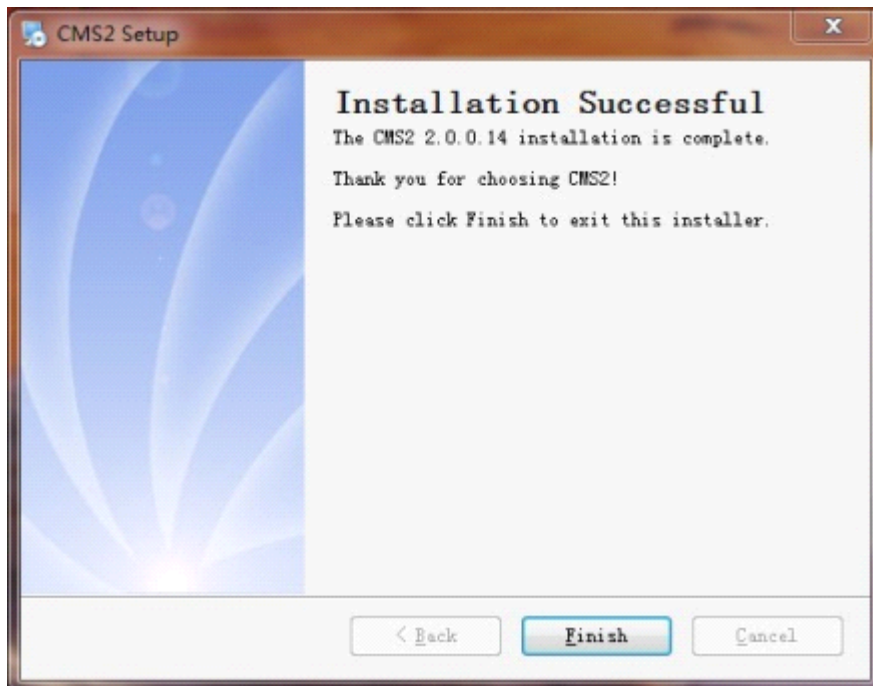
2.2 Client Software Installation

Step 1: double click CMS2.0 installation package, installation interface appears as below.

Step 2: Click "Next", select the software installation path, the default path "C:\Program Files\CMS2.0"



Step 3: Click "Next" and wait for the completion of installation, click "Finish"



2.3 Client Software Uninstallation

Mode 1: Click Start - "Control Panel -> Add/Remove Software -> CMS2.0 -> Remove CMS2

Because uninstalling the software will delete all the relevant documents, it is recommended to back up the video files and Capture image files before uninstallation to avoid being deleted.

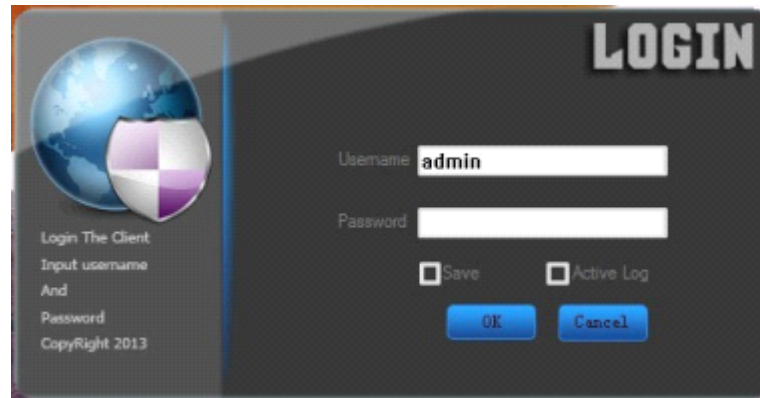
Mode 2: Enter the system control panel and choose CMS2.0, as shown below, then select "Delete". Because uninstalling the software will delete all the relevant documents, it is recommended to back up the video files and Capture image files before uninstallation to avoid being deleted.

3. CMS2.0 Client Operation

3.1 Login Interface

Step 1: Double-click the CMS2.0 shortcuts generated on the screen, the login interface will appear, then enter the user name and password.

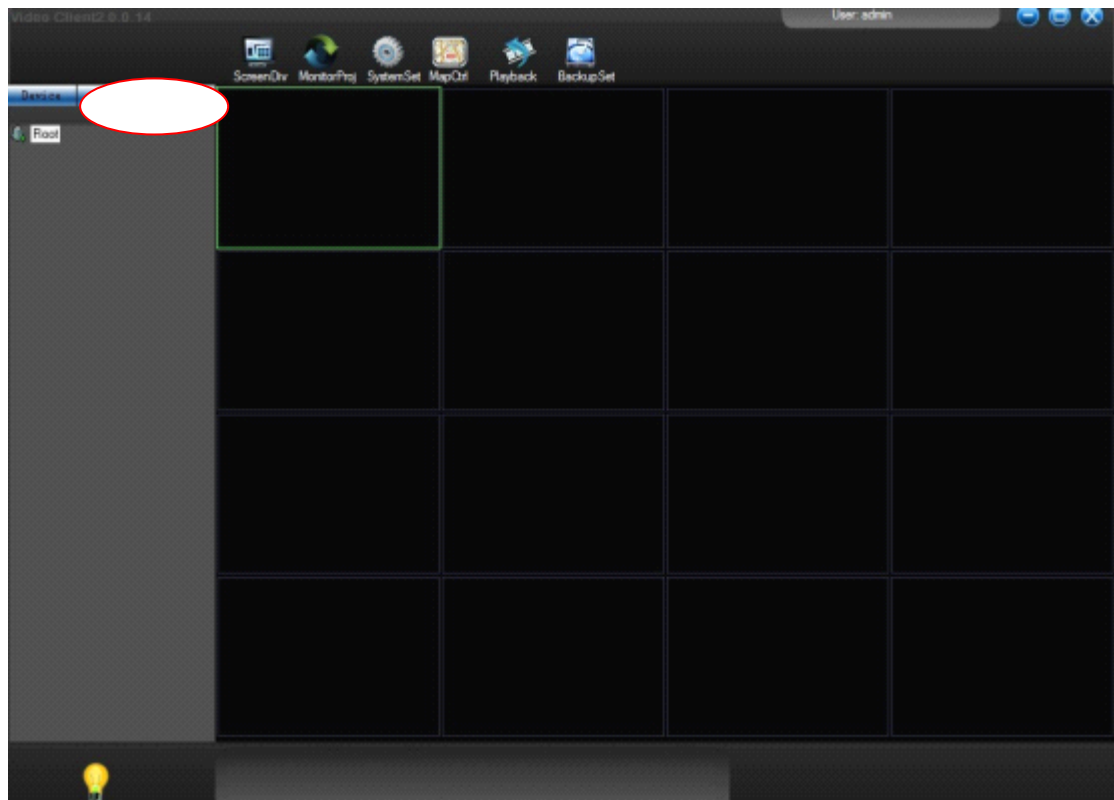
The factory default user name is "admin" and the no password



Step 2: Tick the "Save password" at the bottom of the login screen to save user name and password so that you can login directly without having to enter the user name and password.

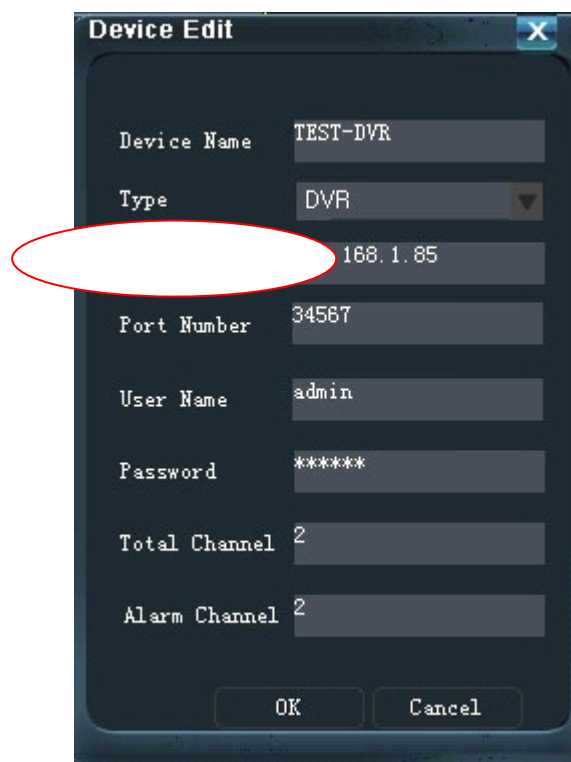
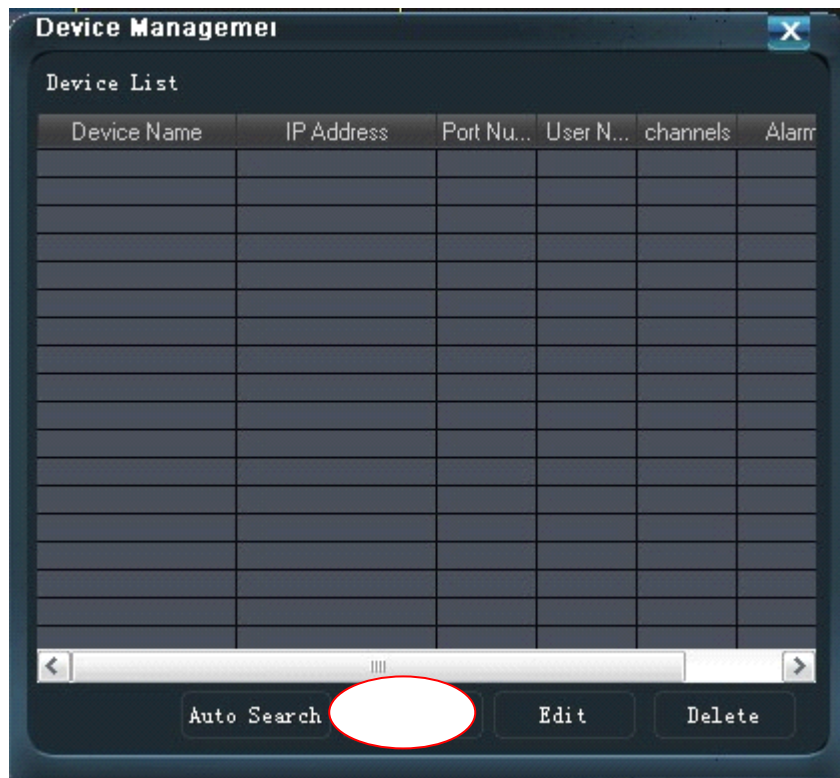
3.2 Addition of Devices

Step 1: Enter the CMS2.0 software interface and click the "Add" button, then the interface of adding devices will pop up.



Step 2: Click "add" on the Add interface as shown below, to increase the devices operating in the network. Take DVR for instance: For devices which IP

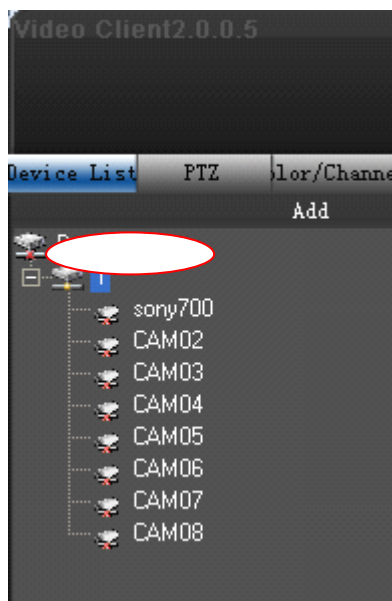
is 192.168.1.85, user name and password are the network user name and password of the devices.



*** Notes ***

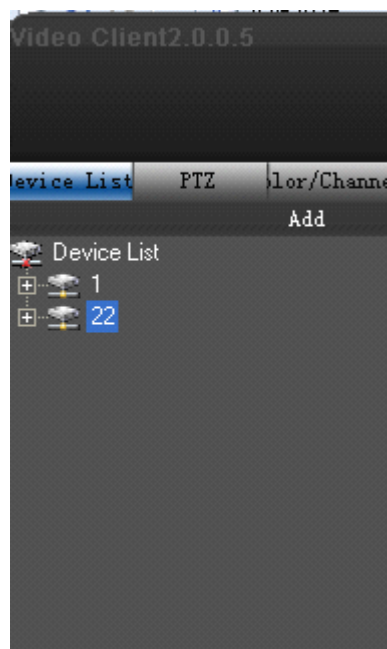
If domain name is used for connection, add domain name in the IP address bar, then the device name can be automatically completed according to different requirements. The port number is that of the added device. The number of channels is completed by the clients, then click OK and close the Add interface.

Step 3: Upon completion, the added devices will appear on the left of the interface. Double-click the device name and expand the device tree, as shown below.

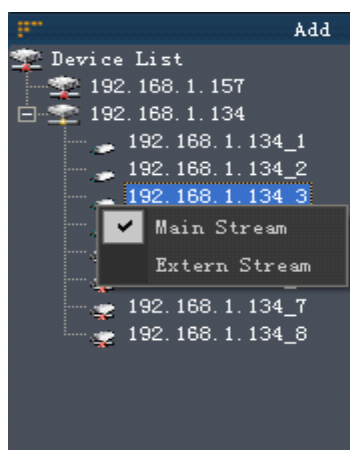


3.3 Real-time Preview

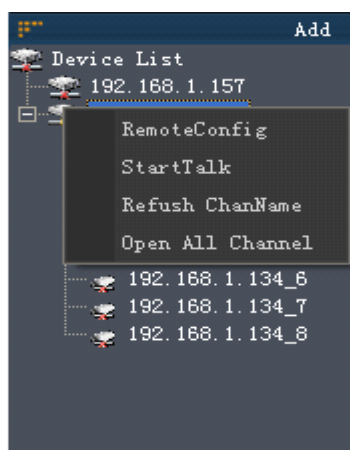
Double-click a channel in the device tree and connect the channel then the real-time video of the channel will appear on the CMS2.0 interface, as shown below.



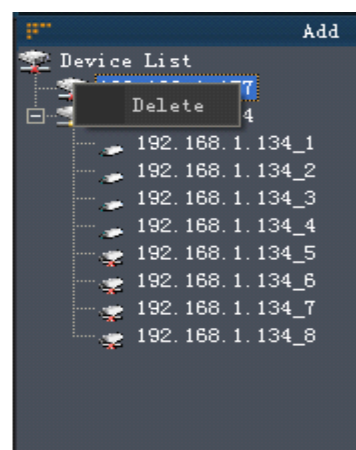
Double click the channel number under the “Device List” to open video. Select main stream or sub stream by right clicking the channel. Operate by right clicking the opened device and delete the device by right clicking the unopened device.



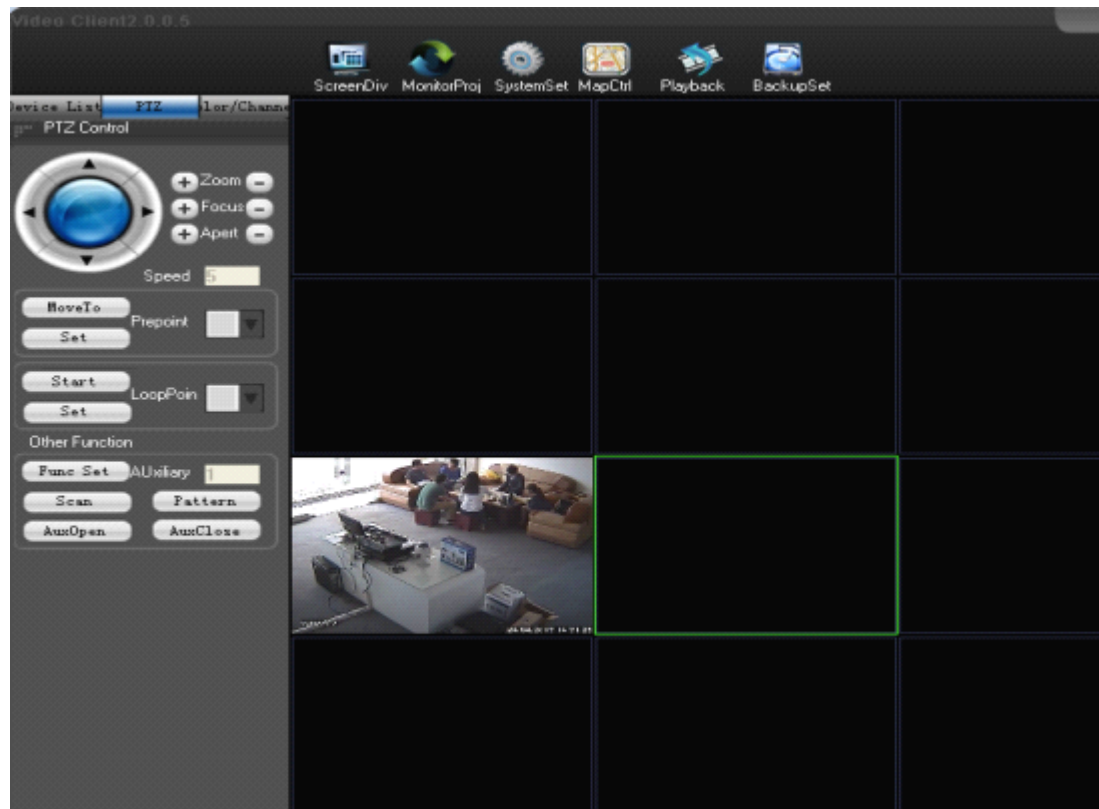
(a) Right click the channel



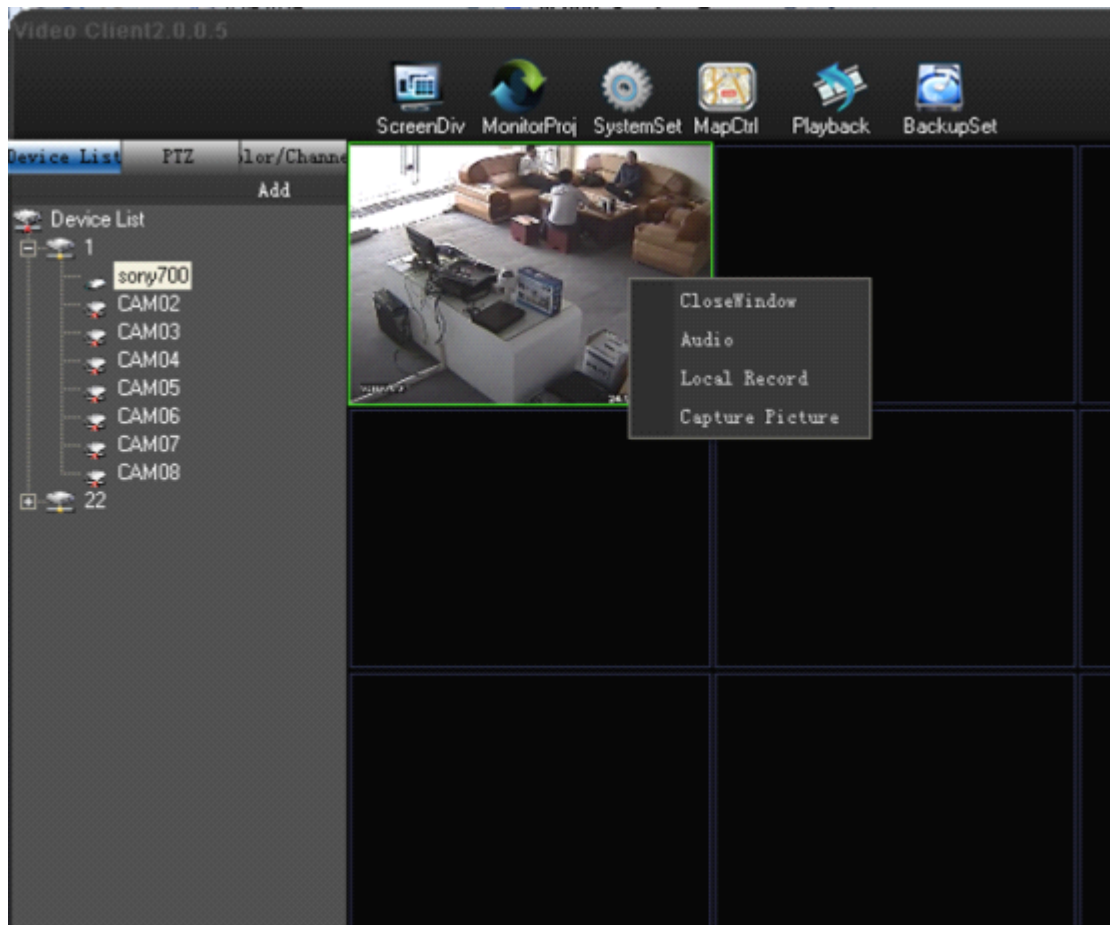
(b) Right click the opened device



(c) Right click the unopened device

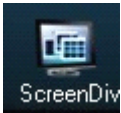






Double-click again to close the channel, and you can also right-click on the screen of the channel, then the shortcut management dialog box will pop up, as shown below. In the dialog box, click "Close window" to close the current channel real-time preview window; click the "Local Video", the video of the channel will be automatically stored in the storage directory of system settings. The default path is "C:\Program Files\CMS2\Record", and the generated video file is in H.264 format. Click "Grab" to automatically capture the current screen and store it in the directory of system settings. The default path is "C:\Program Files\CMS2\Picture" and the generated video file is in bmp format.



3.4 Introduction of The Software Main Interface

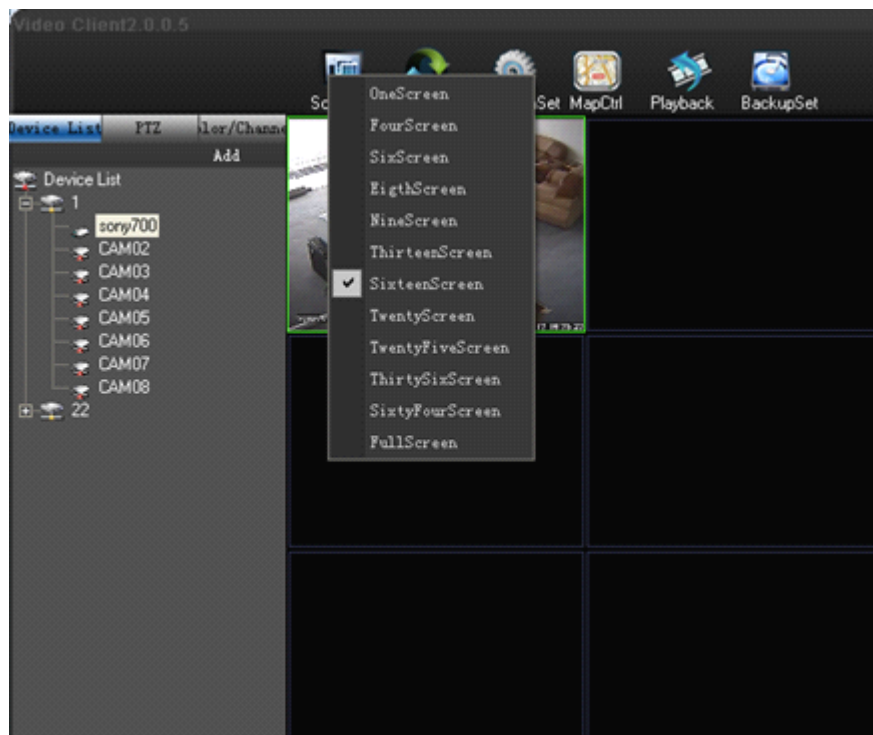
The main interface features buttons at the top left were: " Video Split ", " Monitoring Plan ", "Playback", "Log", "System Settings" and "Real-time backup".

Icons of buttons	Names of buttons
	ScreenDiv
	MonitorProj

	LocalSet
	MapCtrl
	Playback
	Backup

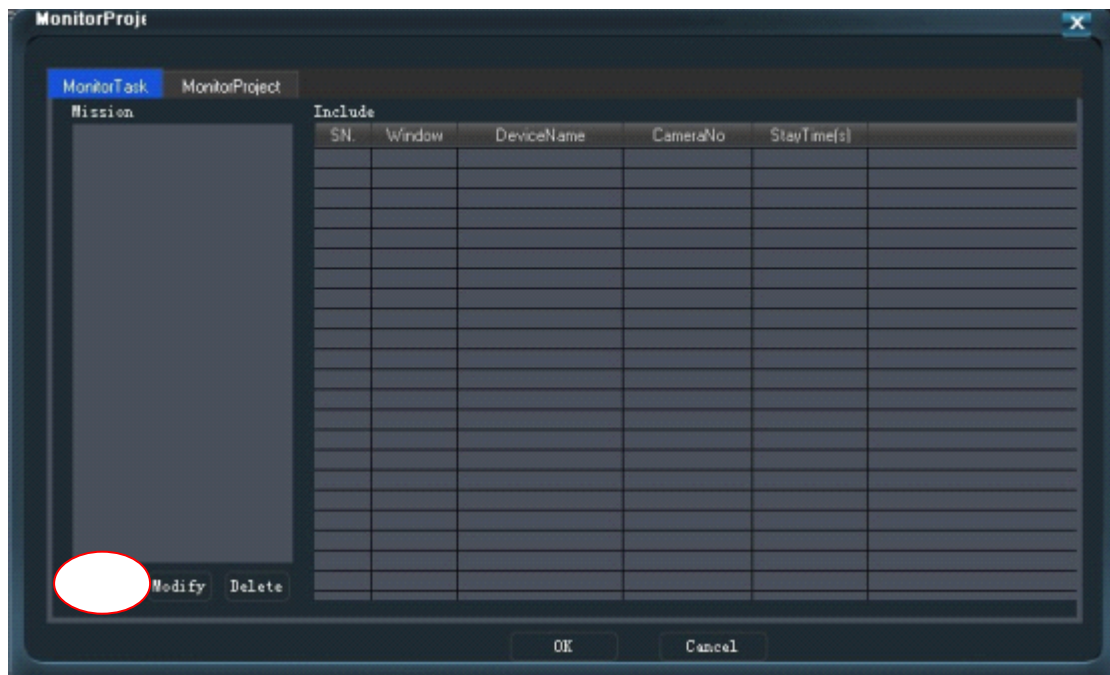
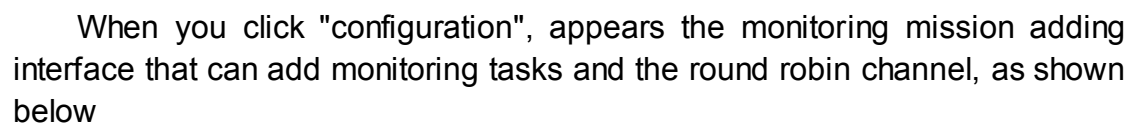
3.4.1 Video Split

Click the button “Video Split” and the main interface can be divided into one/ four/ eight/ nine/ thirteen/ sixteen/ twenty/ twenty-five/ thirty-six screens as shown below.

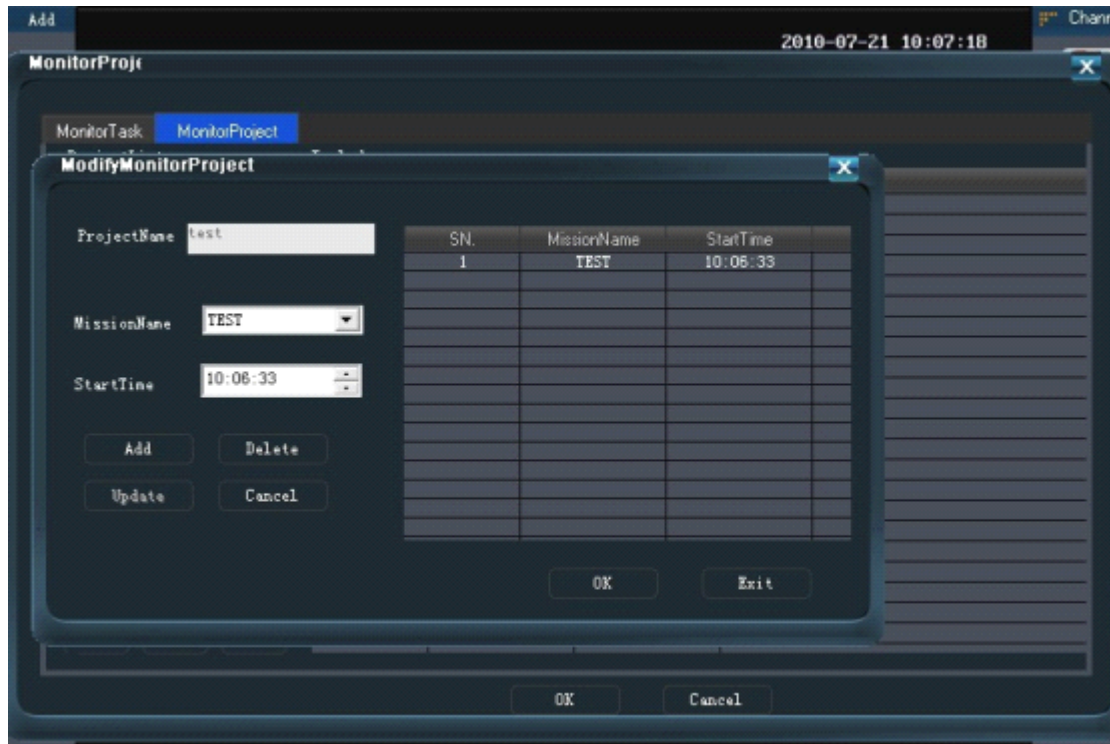


3.4.2 Monitoring Plan

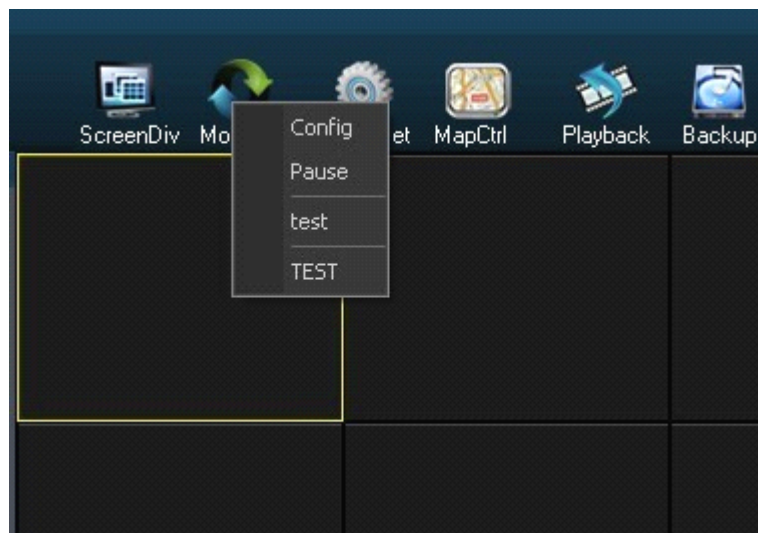
Click the button “Monitoring Plan” and make surveillance plans for every



New monitoring tasks

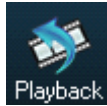


Click monitoring tasks, you can start to implement monitoring tasks. Click the pause menu, pause monitoring tasks, as shown below

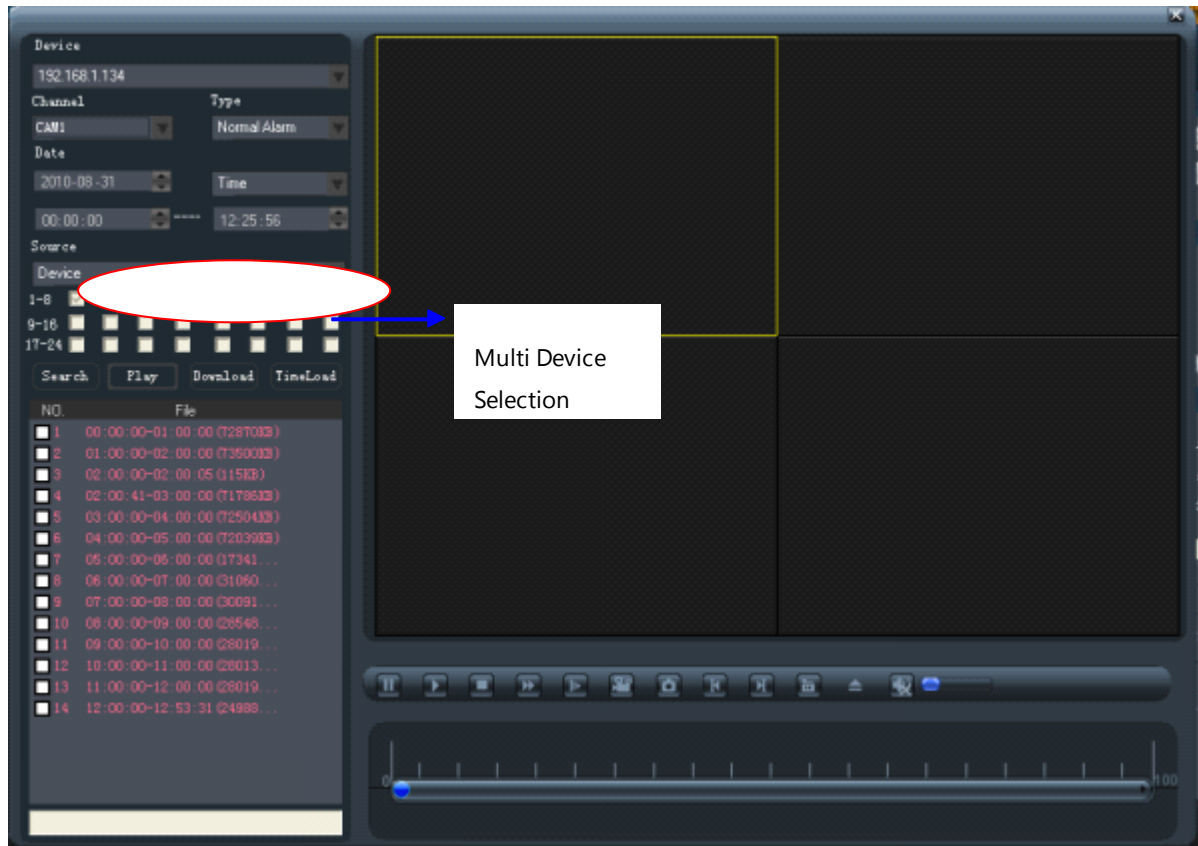


3.4.3 Playback

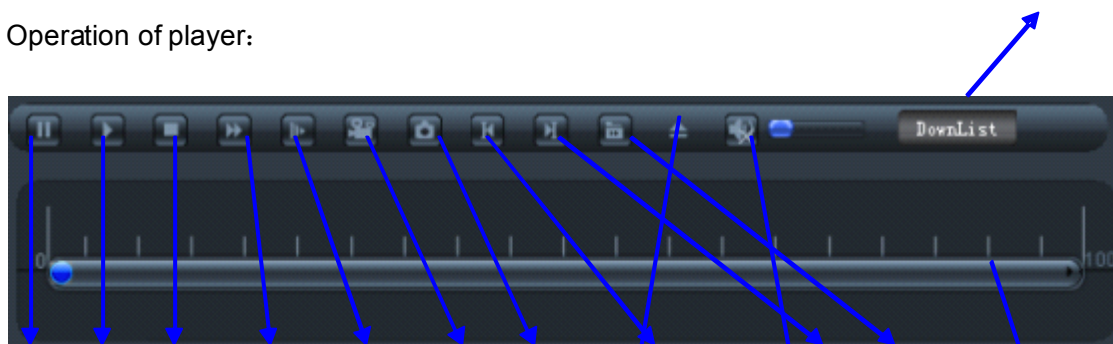
"Playback" function button, remote on-line playback video in digital video recorder, click "Playback", as shown playback interface below, you can select the current added device in the search function on the left. Inquire about one certain video channel, and then select the query video file, click the play button, remote broadcast one certain channel video, click the Download button to download one certain channel to the local video.



Click **Playback** on the main interface, to enter the interface of Playback,



Operation of player:




Pause/ Play/ Stop/ Fast/ Slow /Record/ Capture/ Playback of single frame/ Single frame/
Play the next file

Open the local file/ Open and close audio/ Progress bar

3.4.4 Log

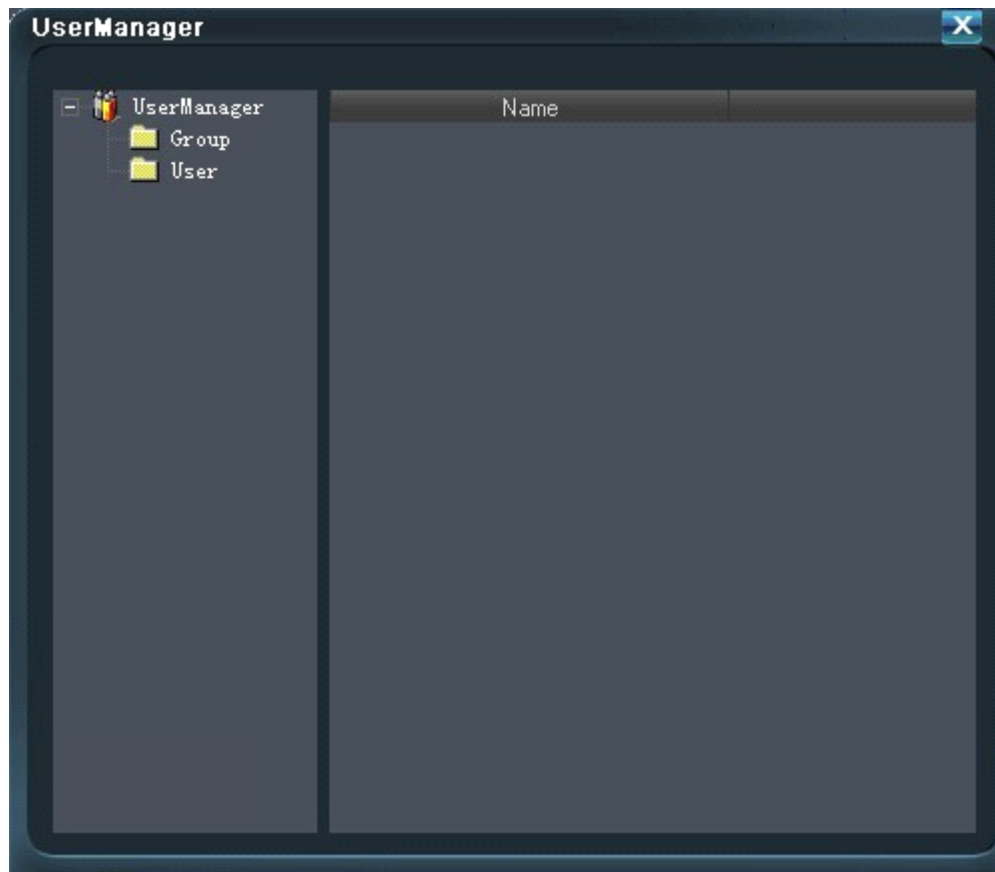
"Log" function button, check the log in digital hard disk video recorder, as shown below



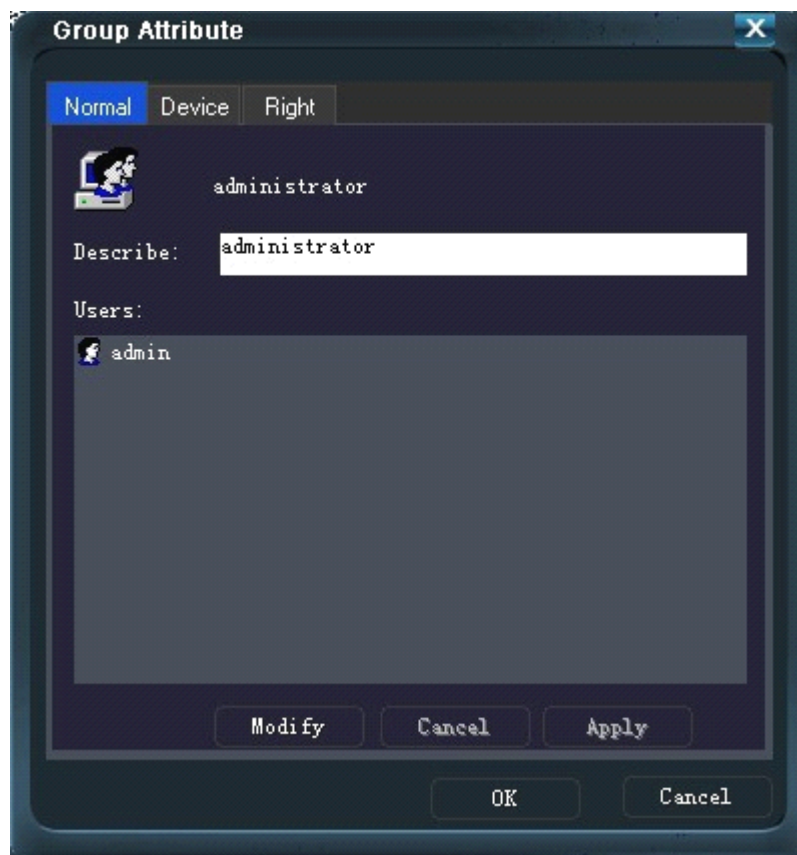
Type	Date	Time	User	Describe
Notify	2010-07-21	10:47:44	admin	DVS-192.168.1.85 connect su
Notify	2010-07-21	10:47:43	admin	DVS-192.168.1.85 disconnect.
Notify	2010-07-21	10:47:43	admin	DVS-192.168.1.85 connect su
Error	2010-07-21	10:47:43	admin	DVS-192.168.1.85 connect fa
Notify	2010-07-21	10:47:40	admin	user adminLogging successful
Notify	2010-07-21	10:47:25	admin	DVS-192.168.1.85 连接成功。
Notify	2010-07-21	10:47:18	admin	用户admin登录成功
Notify	2010-07-21	10:43:37	admin	DVS-192.168.1.85 连接成功。
Notify	2010-07-21	10:43:37	admin	DVS-192.168.1.85 断开。
Notify	2010-07-21	10:43:37	admin	DVS-192.168.1.85 连接成功。
Notify	2010-07-21	10:42:29	admin	DVR-192.168.1.102 连接成功。
Notify	2010-07-21	10:42:29	admin	DVR-192.168.1.102 断开。网
Error	2010-07-21	10:41:05	admin	DVS-192.168.1.85 连接失败。
Error	2010-07-21	10:41:05	admin	DVS-192.168.1.85 连接失败。
Error	2010-07-21	10:41:05	admin	DVS-192.168.1.85 连接失败。
Error	2010-07-21	10:41:05	admin	DVS-192.168.1.85 连接失败。
Error	2010-07-21	10:41:05	admin	DVS-192.168.1.85 连接失败。
Error	2010-07-21	10:40:29	admin	DVS-192.168.1.85 连接失败。
Error	2010-07-21	10:38:51	admin	DVS-192.168.1.85 连接失败。
Error	2010-07-21	10:38:51	admin	DVS-192.168.1.85 连接失败。
Error	2010-07-21	10:38:51	admin	DVS-192.168.1.85 连接失败。
Error	2010-07-21	10:38:51	admin	DVS-192.168.1.85 连接失败。
Error	2010-07-21	10:38:51	admin	DVS-192.168.1.85 连接失败。
Error	2010-07-21	10:38:36	admin	DVS-192.168.1.85 连接失败。
Error	2010-07-21	10:37:33	admin	DVS-192.168.1.85 连接失败。
Error	2010-07-21	10:37:33	admin	DVS-192.168.1.85 连接失败。
Error	2010-07-21	10:37:28	admin	DVS-192.168.1.85 连接失败。

If not want to pop-up log information when it alarms, cancel the tick of "automatic prompts," as shown below

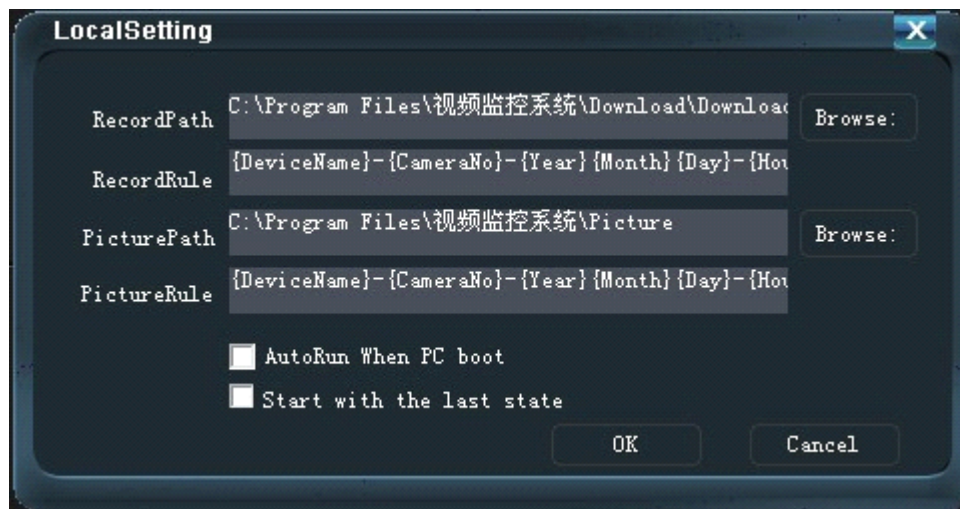




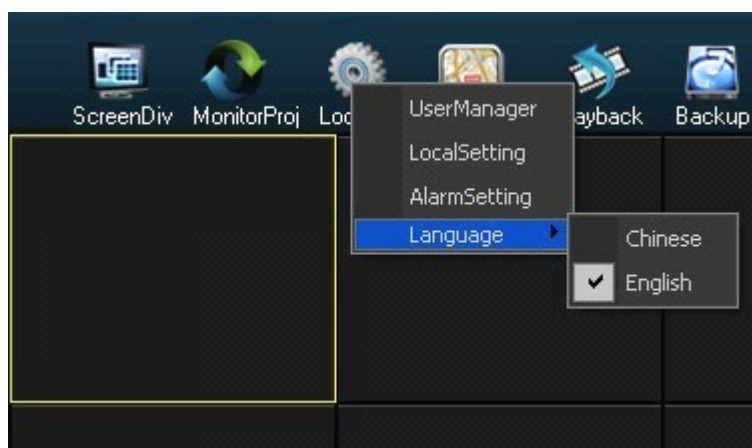
Double-click to edit the users, user groups or modify the password



Click the "LocalSetting" after the pop-up dialog box, click the dialog box on the "Browse" to set up a local video and drawings were the preservation of the path



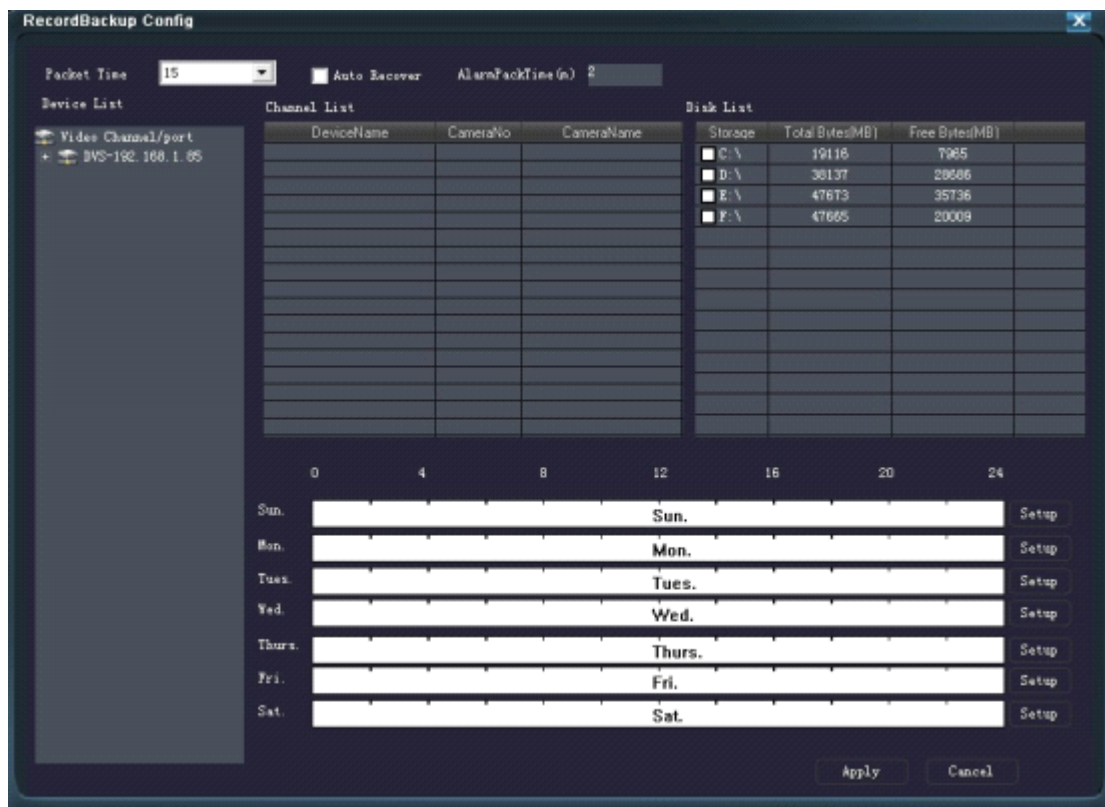
Click the language, select language type, currently only supports English and Chinese



After choosing the language, the Client will restart on their own.

3.4.6 Real-Time Backup

"Real-Time Backup" function button, set the video backup storage mode, backup storage location, establish backup plan and so on, as shown below



3.4.7 PTZ control

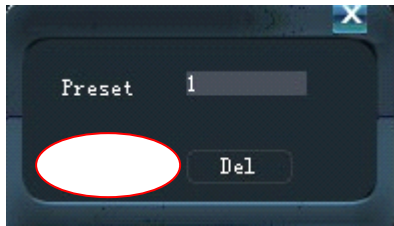
Select "PTZ" tab, enter the PTZ management and control interface, as shown below



Click Settings, and enter the PTZ function setting interface, as shown below. Set up Prepoint and LoopPoin

Prepoint

Set preset number, click the "increase", when the "save" appeared on the channel picture, it means the addition completed. After rotate PTZ, continue to add the prepoint



LoopPoint

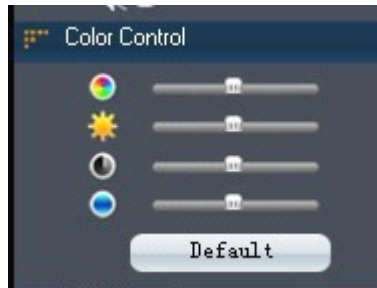
Select the tour route number in the "Tour" option box, and then select the preset point in the "Preset" option box, click the "increase", the selected preset point is set to the tour. Repeat to operate, several preset point will be set to the tour

PTZ enable

Click the appropriate buttons, such as "tour," input tour number under the control of the "value" and then click "Open" enable "tour", click "Close" Stop enabling tour

3.4.8 Color settings

Click the "Color" tab, enter the color adjustment interface, as shown below, the interface shows brightness adjustment, contrast adjustment, color adjustment, hue adjustment by following



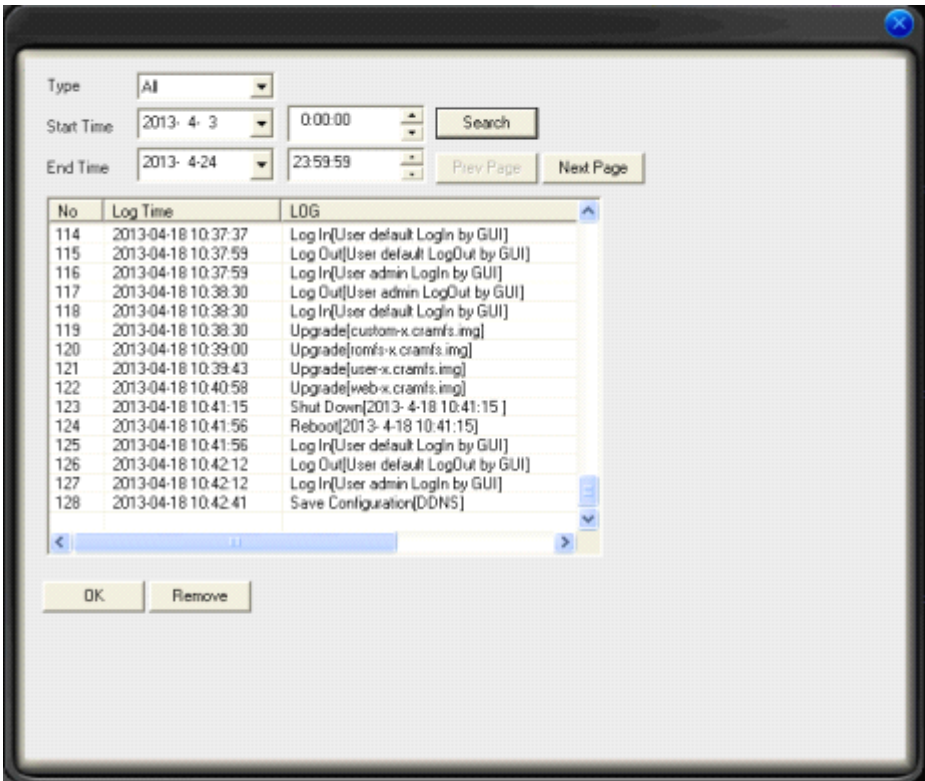
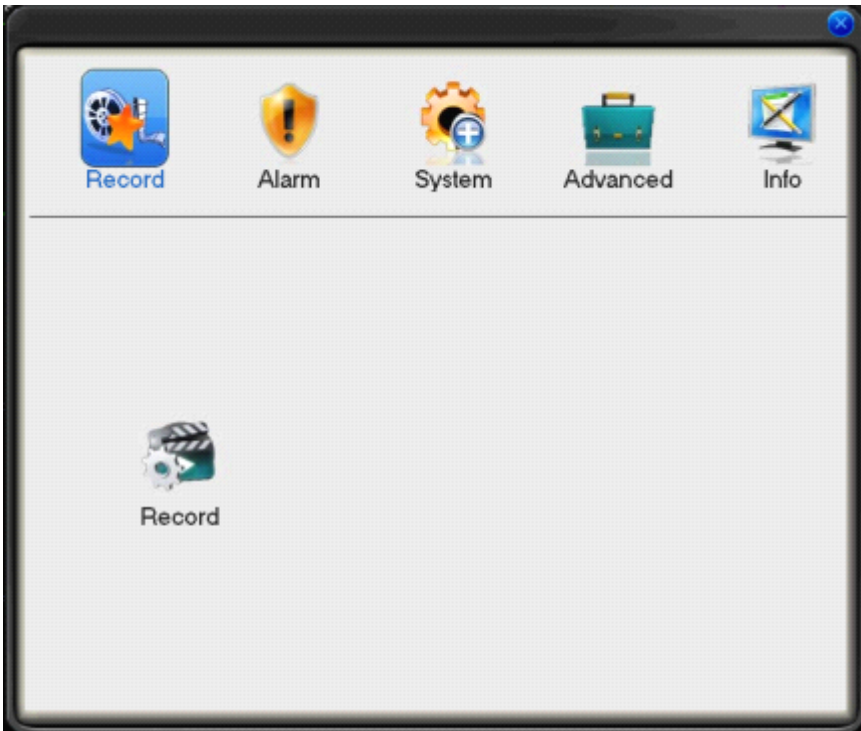
3.5 Remote settings

Choose the device and right-click in the device list, and then enter the remote configuration interface, as shown below



3.5.1 System information view

Check remote connect digital video recorder version information, hard information, log



3.5.2 System settings

【 Common setting 】 to set the system video format, date, time, the

system date and time with PC synchronization, system supporting voice version, and the treatment when the hard disk is full , etc.



